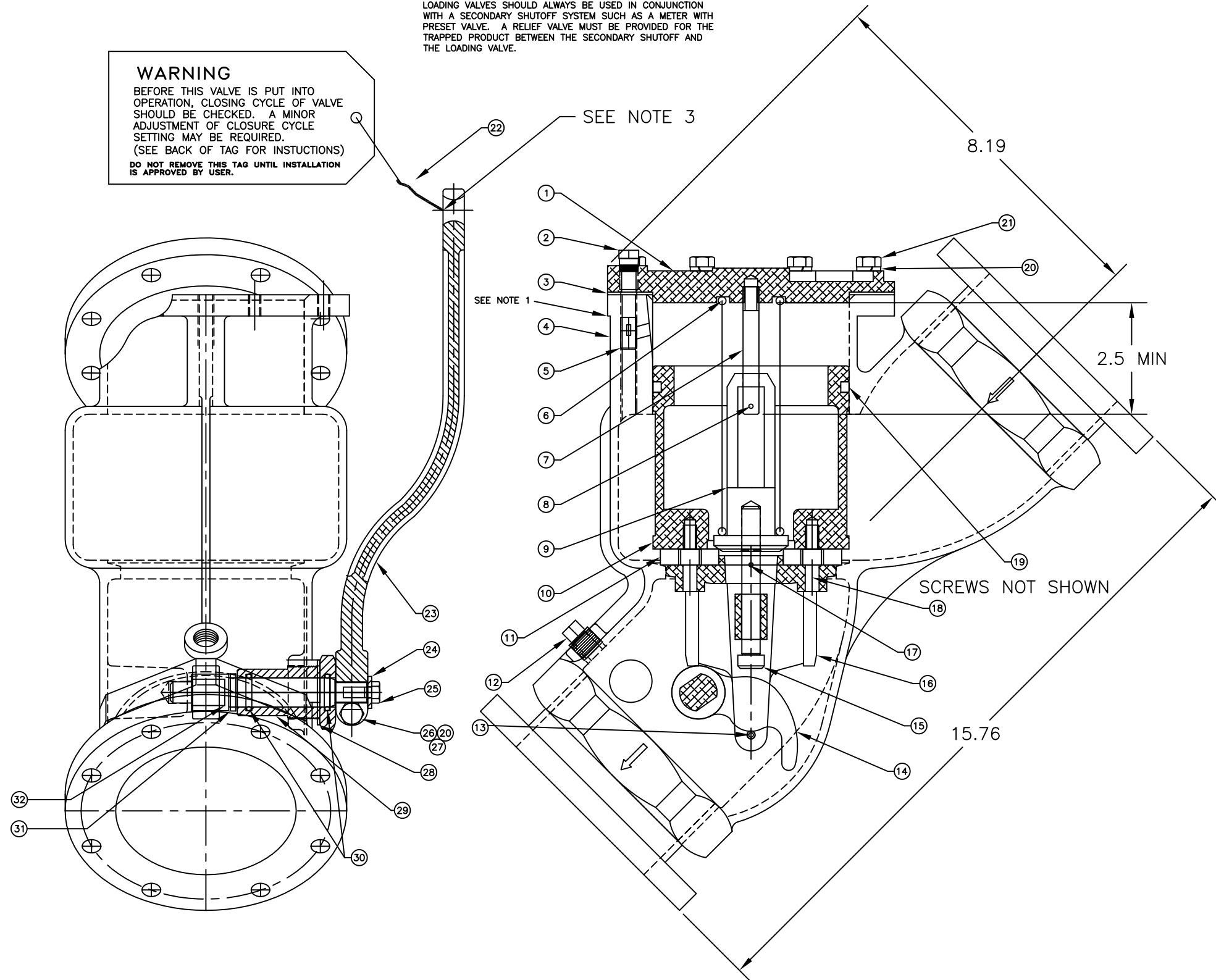


WARNING

BEFORE THIS VALVE IS PUT INTO OPERATION, CLOSING CYCLE OF VALVE SHOULD BE CHECKED. A MINOR ADJUSTMENT OF CLOSURE CYCLE SETTING MAY BE REQUIRED. (SEE BACK OF TAG FOR INSTRUCTIONS)
DO NOT REMOVE THIS TAG UNTIL INSTALLATION IS APPROVED BY USER.

CAUTION:
LOADING VALVES SHOULD ALWAYS BE USED IN CONJUNCTION WITH A SECONDARY SHUTOFF SYSTEM SUCH AS A METER WITH PRESET VALVE. A RELIEF VALVE MUST BE PROVIDED FOR THE TRAPPED PRODUCT BETWEEN THE SECONDARY SHUTOFF AND THE LOADING VALVE.



NOTES:

1. AT ASSEMBLY, STAMP SEAL IDENTIFICATION LETTER "B".
2. TEST PER TP-034.
3. ATTACH WARNING TAG (ITEM 22) AFTER VALVE PASSES TEST.
4. ASSEMBLE ITEMS 1 AND 7 AS WELL AS 4 SCREWS (ITEMS 18) WITH LOCTITE 271 (RED). NOTE: 2.5 DIM.
5. ADJUST FLOW RATE ADJUSTMENT SCREW (ITEM 5) PER TP-034.
6. USE EW Z9 SEALANT ON ITEMS 2,12,21 AND 29 AT ASSEMBLY.
7. MAX ALLOWABLE WORKING PRESSURE: 125 PSI

BILL OF MATERIALS

ITEM	PART No.	PART NAME	MAT'L	QTY
1	454311	BONNET	ALUM	1
2	404936	PLUG	STL	1
3	444983	GASKET	CORK	1
4	566139	BODY	ALUM	1
5	454312	SCREW	SST	1
6	443955	SPRING	STL	1
7	443984	PILOT VALVE	SST	1
8	405034	COTTER PIN	SST	1
9	445069	PILOT VALVE	ALUM	1
10	446995	PLUNGER	ALUM	1
11	446522	SEAL O-RING	BUNA	1
12	447574	PLUG	STL	1
13	564800	ROLL PIN	SST	1
14	440570	CAM	ALUM	1
15	443986	PLUNGER STEM	SST	1
16	452744	PLUNGER GUIDE	ALUM	1
17	405034	COTTER PIN	SST	1
18	452345	SCREW	STL	4
19	446001	PLUNGER RING	TEFLON	1
20	470034	LOCKWASHER	STL	9
21	452345	SCREW	STL	8
22	564804	WARNING TAG	PAPER	1
23	443220	HANDLE WRENCH	IRON	1
24	402912	WASHER	BRASS	1
25	403112	SCREW	STL	1
26	444519	SCREW	STL	1
27	236005400	NUT	STL	1
28	443409EW	GASKET	FIBER	1
29	443972	PACKING NUT	BRASS	1
30	443451EW	SEAL O-RING	BUNA	2
31	444746	BUSHING	BRASS	1
32	450898	OPERATING CAM	SST	1
33	537002203	CAUTION TAG	PAPER	1

EMCO WHEATON					
THE INFORMATION AND DESIGN DISCLOSED BY AND THE COPYRIGHT IN THIS DRAWING IS THE PROPERTY OF EMCO WHEATON, DTM INC., AND CANNOT BE USED WITHOUT WRITTEN PERMISSION.					
DATE	DATE	DATE	DATE	DATE	DATE
DRAWN BY KRM	5/12/99	USED ON		REVISIONS	
CHECKED BY		PROJECT NUMBER		DATE	BY
APPROVED BY		SCALE	WEIGHT	PART NAME	
			22.55 #	4" LOADING VALVE, TTMA, BUNA	
MATERIAL		CASTING NUMBER		SINGLE EXTERNAL ADJUSTMENT	
ALUM ASSY				DRAWING NUMBER.	REV.
C				E0471-045	D